

## 1 ½ ton Pittsburgh Offroad Jack Instructions

Note: read instructions completely before modifying your Floor Jack.

**Warning – Use at your own risk!** You are responsible for your own safety, please use “common” sense. The longer extensions add leverage to your jack base, which will bend if used improperly. The fail point in our destructive testing is the floor jack base, where our 1 ½” pin attaches. This bends your jack, then our extension pin with around 500-1000 lbs of side load, depending on the jack and extension.

### **Recommended limits – Use the shortest extension required**

100% jack rating w/ 6” ext. – 75% jack rating w/ 11” ext. – 50% jack rating w/both stacked at 16” ext.

**Using** -Ensure vehicle and/or jack can roll as you lift, so the load stays centered as the jack arm swings up.  
-When using long extensions, start with it leaning toward you, which will square up as the jack rises.  
-Do NOT work on vehicle while being held with jack. Use jack stands to support vehicle.  
-Weld our 1 ½” pin to your jack for increased strength, a couple stitch welds is all it takes.

**Jack Extension Pin Install:** Remove the cross pin and factory saddle, then install our 1 ½” pin with included washer and reinstall cross pin. If cross pin won’t align, then install 1 ½” pin without washer. There are two styles of jacks and the washer lets our pin work with both, most jacks will use the included washer. It’s normal for our 1 ½” pin to have a little slop, but it should still sit flush on the jack base.

### **Big Wheel Install:**

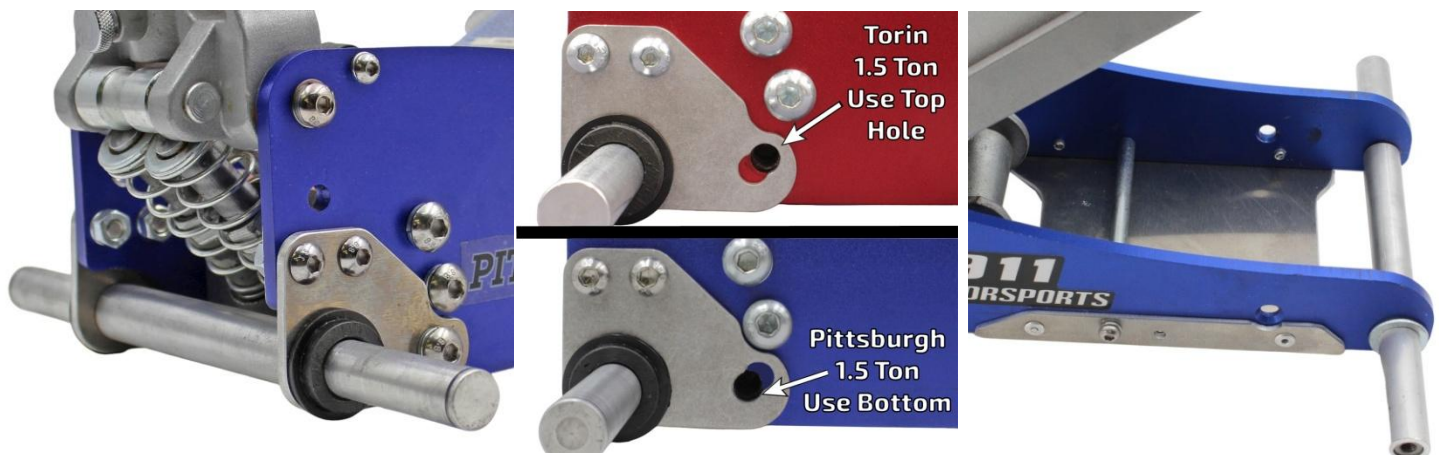
**Step 1: Side Handle** - Remove side handle, it doesn’t work with the big wheels and the axles make better grab handles. Remove the front bolt, raise jack arm up until you can get to the rear bolt, hold rear bolt and spin off side handle.

**Step 2: Rear** - (left & center pics. below) Remove rear casters. Install the side plates and axle with factory bolts, new nuts and factory lock washers on inside of frame. Snug up bolts then tighten evenly. The axle is slightly wider than the frame, which may slightly angle the side plates. This holds the axle from spinning when tight.

**Step 2: Front** - (right pic. below) Remove front wheel. Drill frame holes to ½”. Install new axle shaft and center spacer, then ½” washers and wheel spacers. Temporarily install wheel bolts to hold everything together.

**Step 4: Skid plate** – (right pic.) Jack shown has frame crossbar and uses 4 rivets. For most jacks without a crossbar, use all 6 rivets and don’t use the crossbar hole. Align skid plate notch with hole from the side handle. Clamp skid plate to jack frame or the jack down to work bench. Drill 13/64” hole using skid plate as guide, install a rivet to locate. Drill and install remaining rivets.

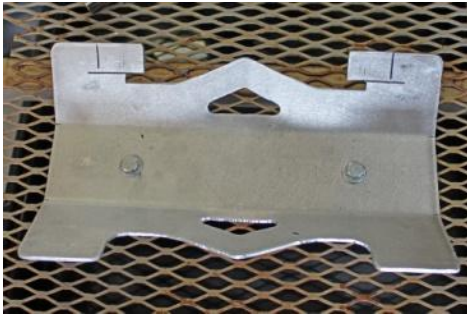
**Step 5: Wheels** - Install plastic washers on rear axle, then wheels, snap rings. Use m8 bolts/washers on front.



## **Vehicle Mount:**

**Step 1:** Bend tabs on wheel mounts - Place jack wheels on mount, center and mark inside of wheel edges on tabs(left pic. below). Clamp in vise to bend tabs, or you can use adjustable wrenches once mount is secured to vehicle(right pic. below).

**Step 2:** Install jack and mounts in vehicle, center and align. Mark, drill and secure mount. Drop jack in before tightening bolts, for final alignment.



**Step 3:** Secure jack handles under jack if desired. Lace the S hook of strap through mount to take up extra length (left pic.). To strap, wrap around saddle and over the v notches(left pic.). Make sure that it doesn't spin off under tension. Ensure the saddle doesn't have any sharp edges that could wear through the strap. For the rear of jack (right pic.) use the handle bolt to center the strap.



This is a brand new product and we would like to hear how the Offroad Jack works for you!

### **911 Motorsports, LLC Warranty Information (Please read before use of product)**

**DISCLAIMER OF WARRANTIES: TO THE FULLEST EXTENT ALLOWED BY LAW, 911 MOTORSPORTS, LLC HEREBY DISCLAIMS ALL OTHER WARRANTIES, INCLUDING BUT NOT LIMITED TO, ANY IMPLIED WARRANTIES OF A) MERCHANTABILITY, OR B) FITNESS FOR A PARTICULAR PURPOSE. BUYER PURCHASES THIS PRODUCT "AS-IS". THE ENTIRE RISK AS TO QUALITY AND PERFORMANCE IS WITH THE BUYER. 911 MOTORSPORTS, LLC SHALL NOT BE LIABLE FOR ANY INJURY OR DAMAGE TO PERSONS OR PROPERTY, OR FOR ANY LOSS OF TIME, INCONVENIENCE, OR LOSS OF USE, INCLUDING ANY CONSEQUENTIAL, INCIDENTAL, OR SPECIAL DAMAGES ARISING DIRECTLY OR INDIRECTLY OUT OF OR IN CONNECTION WITH OUR PRODUCTS USE, INSTALLATION, AND/OR OPERATION, WHETHER SUFFERED BY THE PURCHASER OR ANY OTHER PARTY, AND REGARDLESS OF THE LEGAL THEORY UPON WHICH THE CLAIM IS BASED, EVEN IF 911 MOTORSPORTS LLC HAS BEEN ADVISED OF THE POSSIBILITY OF SUCH DAMAGES. ORJ-1.5T Instructions ver. 3.2 9/16/24**