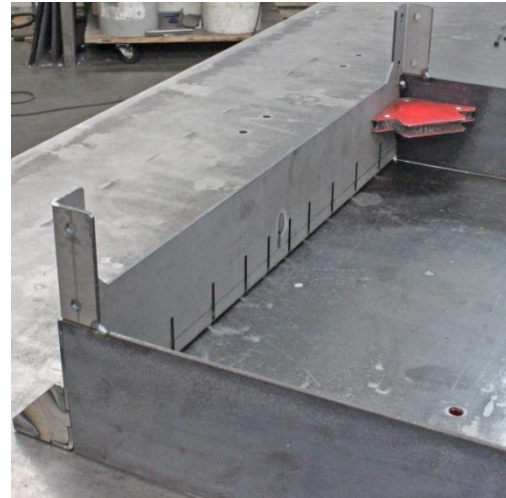


24" Cross Fire - Plasma Table Topper instructions

Note: read instructions completely before assembling. Keep an eye on our YouTube channel for upcoming videos showing all of our modifications to the Cross Fire plasma tables.

Step 1 – Weld gussets & 5/8" tubes - Left pic. below - Start by tacking and welding gussets on the end pieces, use anti-spatter spray. For those with 5/8" post clamp, proceed with welding included tubes, otherwise skip to next step. We include a bolt and sleeve that you assemble on the table to locate and hold the tubes (bottom of the left pic.). Install hand tight then tack on each side, remove bolt/sleeve and move to next hole. Once all tubes are tacked, then weld.

Step 2 – Assemble table - Right pic. below (shows roll-around table which has extra legs, but is otherwise the same) - Place ends upside down on a flat work table and use a magnetic square to hold 4" flat bar. Butt end of flat bar to the face of the end pieces, make sure flat bar is touching end pieces and flush to outside. Table will be 24 15/16" to 25" long max. Tack toward top, then remove square, align and place second tack toward middle, give spacing for three stitch welds. Check fitment on plasma table and verify it hangs properly.



Step 3a – Install middle cutting slat spacer – Below - Flip table over as shown, measure to center and use magnetic squares to hold middle cutting slat spacer. Install a couple slats to verify height and tack.

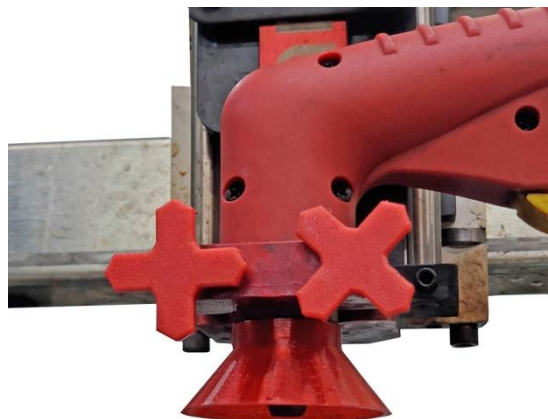
Step 3b - Install the 24 3/4" long x 1 1/2" flat bar center support under the slat spacer, this one is shorter than the cutting slats. Hold, center and tack.



Step 4 – Weld and paint as desired. After painting we recommend to tack the cutting slats to table topper. A tack on the outside bottom of the slat will be easy to cut off when the slat needs to be flipped or replaced. This helps with grounding as well, the bottom of the table topper is also nice to be bare steel.

Step 5 – Install plasma torch cross bolts – Install crosses on new ¼” bolts. These aren’t necessary, but allow for tool free swapping of your plasma torch. Some versions might need modification or extra washers for our cross bolts to work. Let us know if you need to do anything so we can make any revisions.

Step 6 – Install hooks – These can be placed anywhere you desire. You can start with a couple tacks in case you want to move them later.



This is a new product and we would like to hear how the Plasma Table works for you!

911 Motorsports, LLC Warranty Information (Please read before use of product)

DISCLAIMER OF WARRANTIES: TO THE FULLEST EXTENT ALLOWED BY LAW, 911 MOTORSPORTS, LLC HEREBY DISCLAIMS ALL OTHER WARRANTIES, INCLUDING BUT NOT LIMITED TO, ANY IMPLIED WARRANTIES OF A) MERCHANTABILITY, OR B) FITNESS FOR A PARTICULAR PURPOSE. BUYER PURCHASES THIS PRODUCT “AS-IS”. THE ENTIRE RISK AS TO QUALITY AND PERFORMANCE IS WITH THE BUYER. 911 MOTORSPORTS, LLC SHALL NOT BE LIABLE FOR ANY INJURY OR DAMAGE TO PERSONS OR PROPERTY, OR FOR ANY LOSS OF TIME, INCONVENIENCE, OR LOSS OF USE, INCLUDING ANY CONSEQUENTIAL, INCIDENTAL, OR SPECIAL DAMAGES ARISING DIRECTLY OR INDIRECTLY OUT OF OR IN CONNECTION WITH OUR PRODUCTS USE, INSTALLATION, AND/OR OPERATION, WHETHER SUFFERED BY THE PURCHASER OR ANY OTHER PARTY, AND REGARDLESS OF THE LEGAL THEORY UPON WHICH THE CLAIM IS BASED, EVEN IF 911 MOTORSPORTS LLC HAS BEEN ADVISED OF THE POSSIBILITY OF SUCH DAMAGES.